

Delivering Remote Education Due To Covid-19



[click for more info](#)

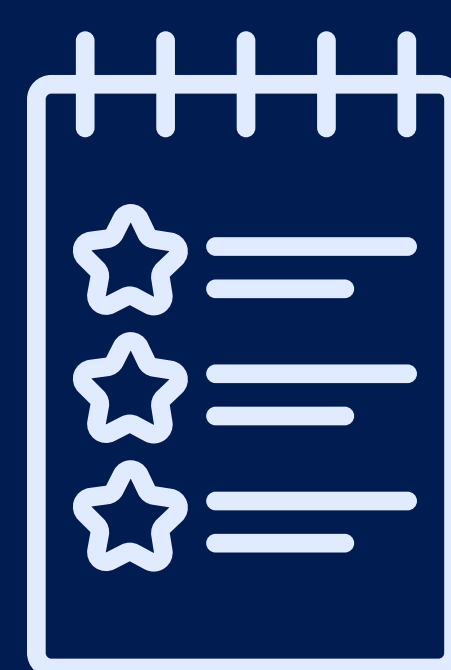
Immediate Access To Remote Education Must Be Provided

Where pupils are required to remain at home, schools should immediately be able to provide them with access to remote education.

Schools are asked to publish information for parents about their remote education provision on their websites

If Required, Use The DfE Remote Education Framework For Guidance

The DfE has produced an optional-use framework to support schools in England, to establish and improve remote education provision. Useful resources are sign-posted within the Framework.



[click for more info](#)



[click for more info](#)

There Are Two Routes To Help Provide Remote Internet Access

The DfE advises 2 options to support disadvantaged pupils connect to the internet to access remote learning:

- A Connectivity Support Grant to support schools with the costs associated with connecting pupils online
- Provision of a 4G router or dongle

1: Connectivity Support Grant

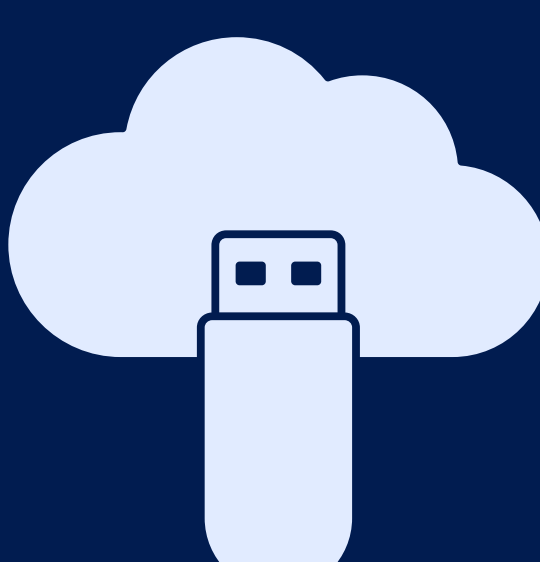
A grant up to £75 is available for year 3 to 13 disadvantaged pupils at eligible settings, to support access to the internet where face-to-face education is disrupted due to Covid-19.

Grant applications should be made in January 2022 to cover costs incurred from 1 September to 31 December 2021.

A grant could support the cost of an existing router/dongle



[click for more info](#)



[click for more info](#)

2: 4G Wireless Routers (Dongles)

4G wireless routers are available for disadvantaged children, social care leavers and students aged 16 to 19 who do not have access to broadband at home.

Contact Gov.uk to request 4G routers or contact Schools Broadband on 01133 222 333 to order privately. You will need to arrange SIM cards and data packages before distributing routers to pupils.

Schools Broadband data packages provide full Prevent Duty compliant filtering and start at £10 per month.

Re-using Existing 4G Wireless Routers

Existing 4G wireless routers issued by the DfE before 31 August 2021 can be reused. You will need to reset them and replace the SIM cards.

SIM cards from Schools Broadband are available from £10 per month and include full Prevent Duty compliant filtering. These can be used, returned and reused by multiple students, allowing you to reallocate them as needed.



[click for more info](#)



Online Safeguarding In A Remote Setting Is Your Responsibility

Appropriate Filtering For Education Settings

Please be aware it is now a school's statutory duty to provide a safe online environment if the school provides internet access for remote learning. Standard 4G connections do NOT include web filtering.

Schools Broadband 4G services support statutory filtering requirements.

Find out more at www.schoolsbroadband.co.uk/our-services/connectivity/4g-mobile-broadband/